



MD8 Airport

The Portable Air Sampler

Simplifying Progress

SARTORIUS

MD8 Airport – Portable, Reliable, Fast

MD8 Airport is the air sampler for the pharmaceutical industry, biotechnology, food and beverage industry, for hospitals, and for measurements within the scope of environmental protection and occupational safety.

Benefits offered by Sartorius MD8 Airport:

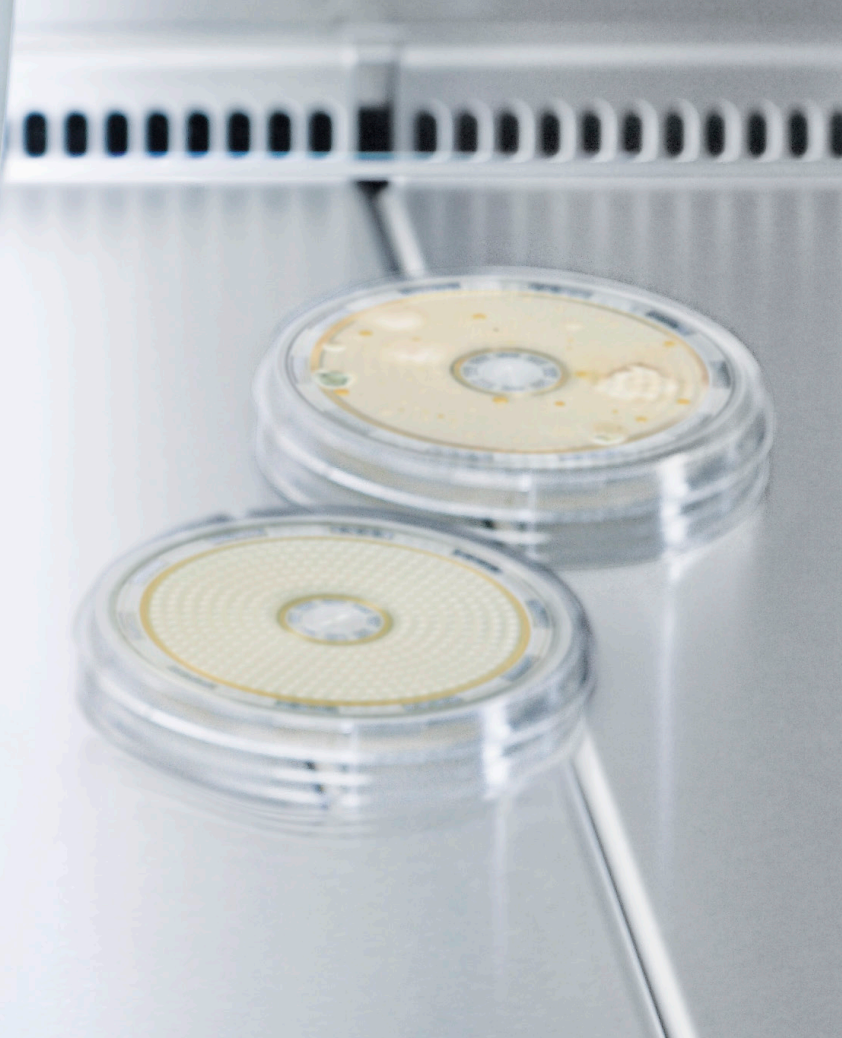
- Battery operated and portable – so it can be used everywhere
- Battery power level clearly indicated so constant performance during sampling is guaranteed
- Ergonomically designed and easy to clean
- User friendly prompting with the option of four languages: English, French, German and Spanish
- Flexible options for customized use including adjustable air throughput and air flow rate
- Parameters last used are stored even after automatic shut-off
- Can be calibrated on-site
- Utilizes Gelatin Membrane Filter Method, allowing for reliable and accurate results

The Gelatin Membrane Filter Method offers:

- High retention rate for microorganisms and viruses
- Protection of microorganisms sampled from drying out for a relevant and meaningful sampling time
- Use of a variety of nutrient media
- The solubility of the gelatin membrane filter allows further applications (e.g. rapid microbiology, virus sampling and sampling of high bacterial concentrations).

MD8 Airport can also be used with BACTair™ culture media plates.





Technical Specifications

MD8 Airport

| | |
|--|---|
| Air flow control | by an integrated impeller wheel |
| Air flow rate adjustable in five steps | 10 l/min., 20 l/min., 30 l/min., 50 l/min. 125 l/min. (only when BACTair™ culture media plates are used) |
| Pre-set sample volumes | 25, 50, 100, 250, 500, 750 and 1000 liters |

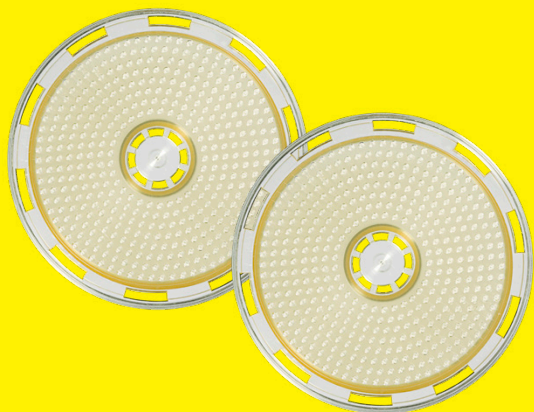
Table of correlation of sampling volumes | sampling times at the given air flow rates

| Sampling volume in liters (l) | 25 l | 50 l | 100 l | 250 l | 500 l | 750 l | 1000 l |
|---|---|-------|-------|--------|--------|--------|--------|
| Sampling time in seconds (s) | | | | | | | |
| at 10 l/min. flow rate | 150 s | 300 s | 600 s | 1500 s | 3000 s | 4500 s | 6000 s |
| at 20 l/min. flow rate | 75 s | 150 s | 300 s | 750 s | 1500 s | 2250 s | 3000 s |
| at 30 l/min. flow rate | 50 s | 100 s | 200 s | 500 s | 1000 s | 1500 s | 2000 s |
| at 50 l/min. flow rate | 30 s | 60 s | 120 s | 300 s | 600 s | 900 s | 1200 s |
| at 125 l/min. flow rate | 12 s | 24 s | 48 s | 120 s | 240 s | 360 s | 480 s |
| Additionally user-definable sampling volumes | from 10 to 2000 liters in 5-liter increments | | | | | | |
| Total sampling time with one battery charge | approx. 4.5 hours at 50 l/min., 4 hours at 125 l/min. | | | | | | |
| Power consumption | 5 - 14 Watt depending of filter pressure drop | | | | | | |
| Weight | approx. 2.5 kg | | | | | | |
| Dimensions (L × W × H) | 300 × 135 × 165 mm | | | | | | |
| Certified for compliance with the CE requirements | | | | | | | |



Specifications of BACTair™ Culture Media Plates

| | |
|---------------------------------------|---------------------------|
| Material | Polystyrene |
| Dimensions | 116 × 24 mm |
| Number of impaction holes | 400 holes, each Ø 0.47 mm |
| High particle retention for particles | > 0.65 µm |



Specifications of Gelatin Filter Disposables


| | |
|-----------------------------------|---|
| Materials | gelatin (water soluble) Cyrolite (if with single-use holder) |
| Nominal pore size | 3 µm |
| Filter diameter | 25 mm, 37 mm, 47 mm, 50 mm, 80 mm (for standard 90 mm agar plates) |
| Limiting operating conditions | max. 30°C at 85% relative humidity |
| Retention of bacteria and viruses | 99.9995% for Bac. sub. niger spores at 0.25 m/s inlet velocity 99.94% for phage T3 (coli phage) at 80% relative humidity and 0.3 m/s inlet velocity |



Battery

| | |
|--------------------------|---|
| Rechargeable battery | NiMH 16.8 volts/3800 mAh |
| Battery charger | input 100 – 240 V 47 – 63 Hz/600 mA; output 24 V/1000 mA |
| Charging time of battery | approx. 4.5 hours when completely discharged |
| Battery charger | with changeable plugs for worldwide use |

MD8 Airport can be used during recharging.

 Find out more
For more information, please visit
www.sartorius.com



Ordering Information

| Description | Order No. |
|--|------------------|
| Air sampler MD8 Airport and battery charger (69898525) | 16757 |
| Accessories for MD8 Airport (further accessories on request) | |
| Adapter for gelatin filter disposables | 17801 |
| Adapter for BACTair™ culture media plates | 17803 |
| Filter holder for 80 mm | 17655 |
| Filter stack (10 filter holders) | 17656 |
| Adapter for 47 mm gelatin filter | 1ZAD--0026 |
| Battery charger | 69898525 |
| 80 mm Gelatin filter disposables (sterile and individually packed) | |
| Pack of 10 disposables (single packed) | 17528--80----ACD |
| Gelatin disc filters | |
| Gelatin filter 25 mm (50 per box) | 12602--25----ALK |
| Gelatin filter 37 mm (50 per box) | 12602--37----ALK |
| Gelatin filter 47 mm (50 per box) | 12602--47----ALK |
| Gelatin filter 47 mm (100 per box) | 12602--47----ALN |
| Gelatin filter 50 mm (50 per box) | 12602--50----ALK |
| Gelatin filter 50 mm (100 per box) | 12602--50----ALN |
| Gelatin filter 80 mm (50 per box) | 12602--80----ALK |
| Culture media plates | |
| BACTair™ culture media plate with TSA, 110 mm, sterile and individually packaged, 10 pcs. | 14320-110----ACD |
| BACTair™ culture media plate with Sabouraud Agar, 110 mm, sterile and individually packaged, 10 pcs. | 14321-110----ACD |
| Covers for BACTair™ culture media plates, 10 × 2 units individually, sterile packaged | 1ZPX-D0002 |
| Dissolve the gelatine filter for subsequent PCR analysis | |
| Microsart@solve (camber to dissolve 47 mm gelatin filter) | 1Z----0006 |
| Adapter MD8 Bayonet to Tri-Clamp | 1ZAD--0025 |
| Clamp for Tri-Clamp connection | SB-18-00-0194 |
| Sealing for Tri-Clamp connection | 7EDSCV0003 |




Germany

Sartorius Lab Instruments GmbH & Co. KG
Otto-Brenner-Straße 20
37079 Göttingen
Phone +49 551 308 0

USA

Sartorius Corporation
565 Johnson Avenue
Bohemia, NY 11716
Phone +1 631 254 4249
Toll-free +1 800 635 2906

 For further contacts, visit
www.sartorius.com